

UNIZ Dental Software

Uniz Dental software enhances precision and efficiency in dental procedures.



Conversion Capabilities

Trimming, filling, hollowing, drain hole, adding base, and text marking enable the conversion of oral scan data to dental models.



User-Friendly Process

The application-based process is simple and easy to use.



Intelligent Placement

Auto-orientation and auto-layout features ensure intelligent placement.



Risk Detection

The enclosed chamber (cup) and collision detection intelligently identify printing risks.



One-Click Printing

Eliminates complex procedures, making dental 3D printing more efficient.



Model-to-Platform Check

Instant model-to-platform check for seamless printing.

Technical Specification

PERFORMANCE	Printing Technology	Masked Stereolithography (MSLA)
	Build Volume	198 × 124 × 180mm 7.8" × 4.9" × 7.1"
	XY Resolution	34μm
	Maximum Accuracy*	±10μm
	Layer Thickness (Z Resolution)	10~200μm (25, 50, 100μm recommended)
	Separation Mechanism	Patented low force stereo peeling technology Micro-stereo composite peeling structures Unit (MPS)
	Support	Uniz smart support technology
HARDWARE	Printing Speed**	8 dental models in 5 minutes
	Dimension / Weight	383 × 425 × 712 mm [W×H×D] 15.1" × 16.7" × 28" 34KG / 75LB
	Operating Temperature	18~28° C (64~82° F)
	Power Requirement	110V 6A / 220V 3A 60 Hz / 50 Hz
	Optical System	5 th Generation Collimated Light Source
	Mechanical	Injection Molding & CNC, Sheet Metal
	Connectivity	USB Flash Drive, Wi-Fi, Ethernet
	Control Pannel	7" Touch Screen
	Slice Format	zslr

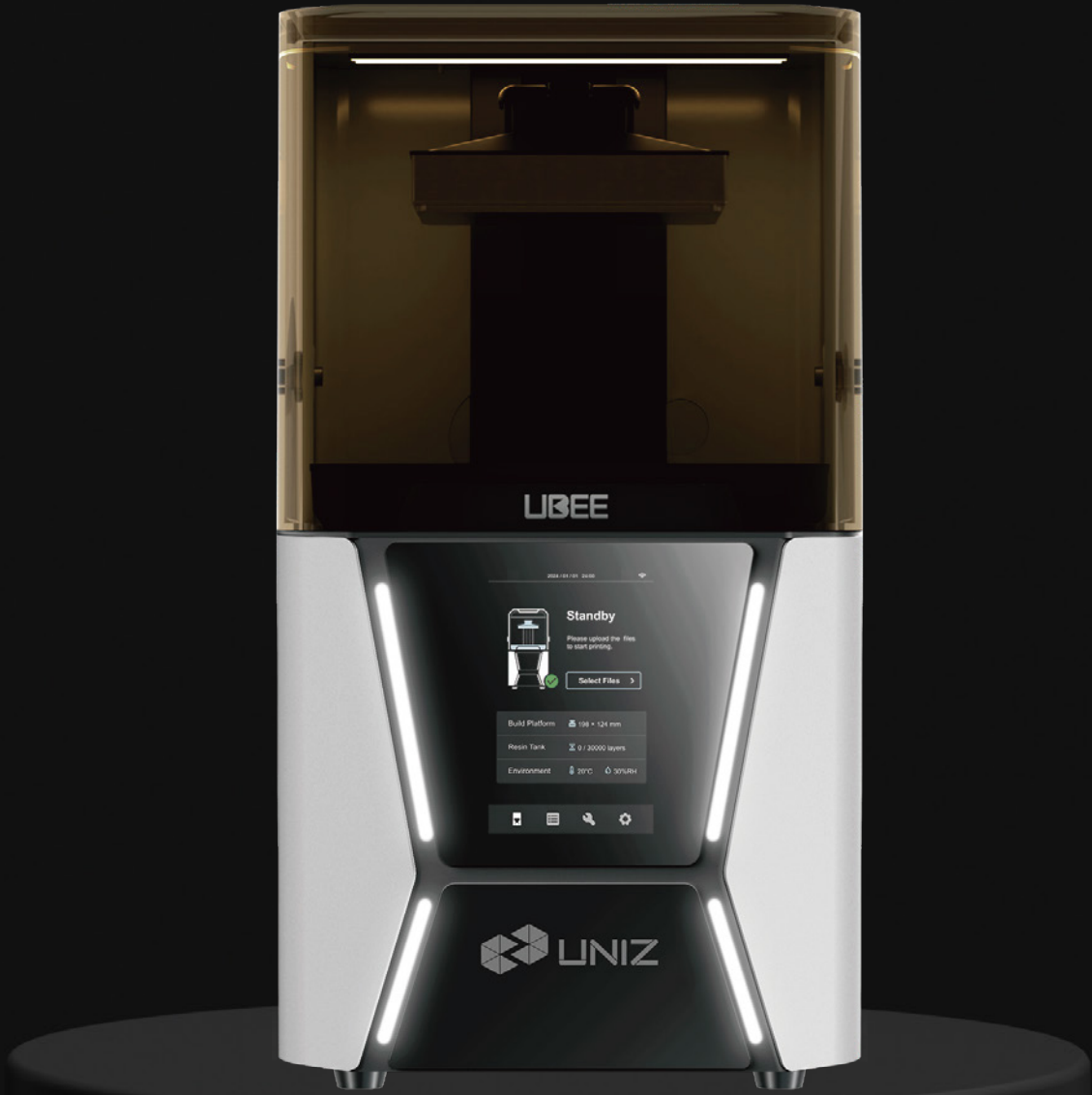
* Maximum accuracy is only achievable at integer multiples of smallest pixel sizes.

** The test models are Aligner models with a layer thickness of 130μm.



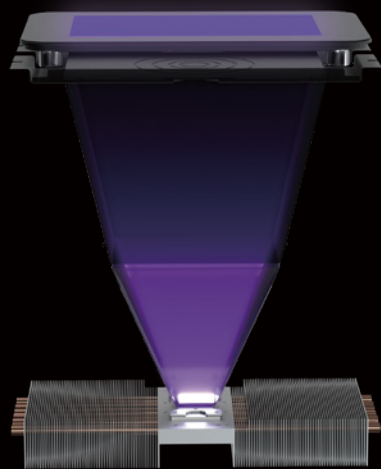
UBEE

World's Fastest Desktop Dental Powerhouse



Ultrafast, Intelligent, Rock-Solid

Core Features



Smart Sensor & Control System (SSCS)

- ❖ FSD Module- 4 Z-Axis Force Sensor integrated into the LPU panel
- ❖ Foreign Object Detection
- ❖ Printing Mechanics Control System

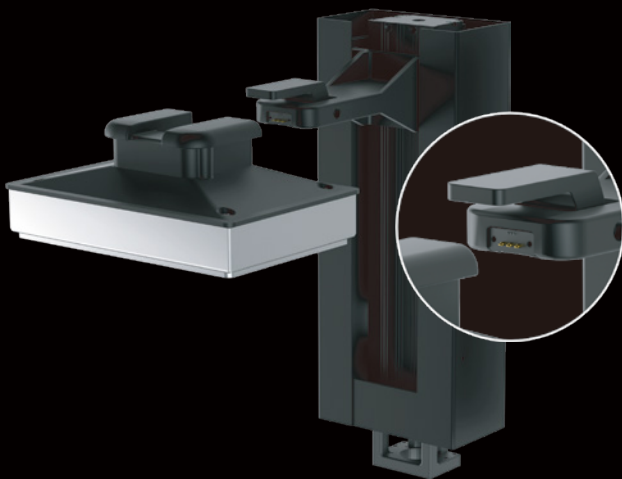
Liquid Cooling Empowered High Power Photocuring System (LEPH 2.0)

- ❖ Mask panel Liquid Cooling System
- ❖ Force Sensing Display Panel (FSD Module)
- ❖ Light Processing Unit 6 (LPU 6)
- ❖ Intelligent Control Systems



Industrial Robot - KK Linear Module

- ❖ High-Precision Ball Screw, Servo Motor Control System
- ❖ Ultra-High Rigidity and Longevity



Smart Identification System (SIS)

- ❖ With NFC and ID Sensing Board Inside
- ❖ Automated Resin Tank Detection
- ❖ Automated Build Platform Detection

UNIZ Cloud

Revolutionize your printing process with our intelligent platform designed for workshops and labs.



-  Real-time task monitoring & management
-  Visual data analytics for better scheduling
-  Detailed printer status monitoring
-  Instant task completion notifications