

Edge E2

The Ideal Choice To Go Digital



RAYSHAPE

Enhanced Precision

The Edge E2 surpasses the Edge E1 in precision with its 6K LCD screen and 34.4µm pixel size, offering greater accuracy, clearer details, and smoother surfaces.

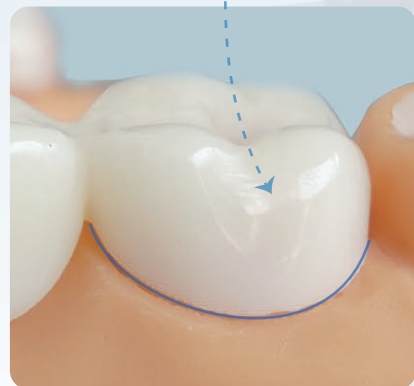
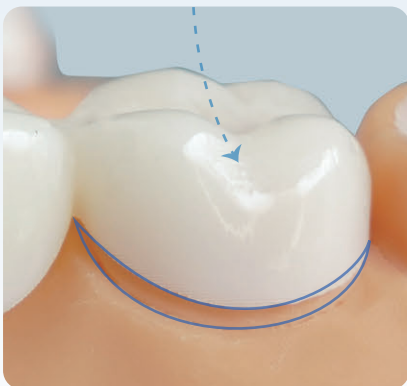
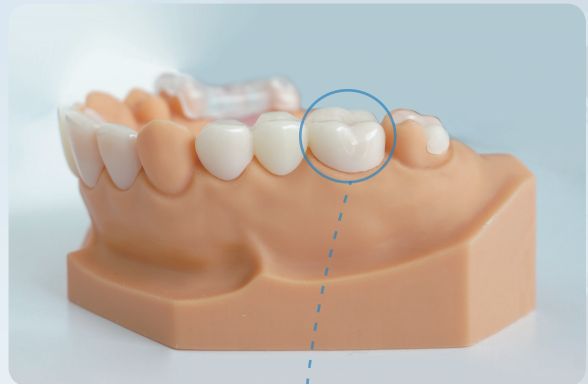
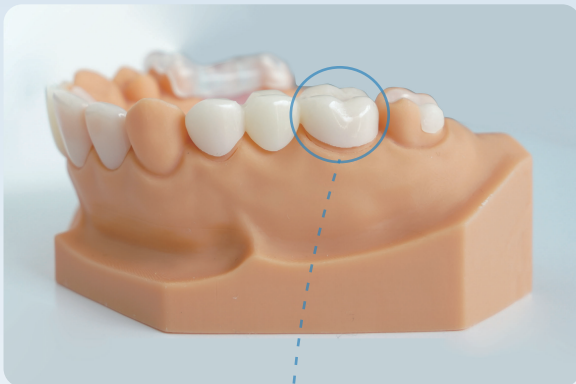


Pixel Size
34.4µm



Resolution
5760 × 3600 (6K)

Edge E1 vs Edge E2



Consistent Results

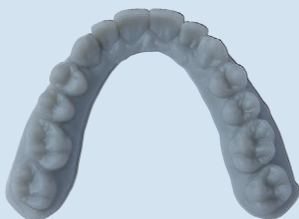
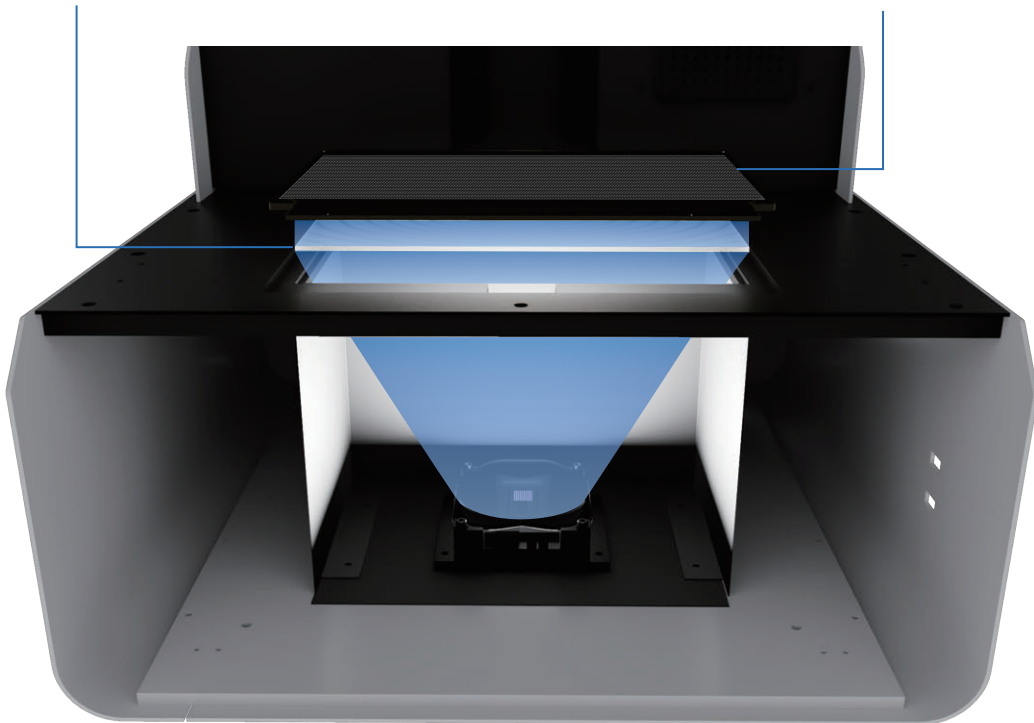
The Edge E2 features advanced Fresnel lenses and proprietary light uniformity control software for consistent and reliable full-platform resin curing, enhancing the accuracy of dental applications to meet high industry standards.

Fresnel Lens

Helps distribute light more evenly across the build platform.

Light Uniformity Control Software

Further enhances light uniformity, achieving up to 93.4%.*



≥95%*
Scan-Match Rate

*Verified by RAYSHAPE Test Lab.

Versatile Solution

The Edge E2 is a highly integrated solution for over 20 dental applications. The RAYSHAPE ShapeMaterials Series offers a comprehensive range of resins for implants, restorations, and orthodontics, ensuring high standards in strength, aesthetics, and clinical versatility.



Model XE
● Apricot



DT
● Pink



Record Model
● White



TT C&B
● A1 ● A2 ● A3



Soft Pink 2.0
● Pink



Ortho Model
● Orange



Cast
● Green



SG V2
● Translucent



Tray
● Purple



Try - in
● A2



Splint
● Clear



Model WW
● Blue

Fast Printing

The Edge E2 builds on the Edge E1's fast printing features, optimizing efficiency for both clinical practices and lab production. It accelerates the process from treatment design to dental model fabrication, boosting productivity and enabling faster, personalized treatments.



- | | | | |
|---|--|---|--|
| <input checked="" type="checkbox"/> Surgical guides | <input checked="" type="checkbox"/> Splints | <input checked="" type="checkbox"/> Custom Tray | <input checked="" type="checkbox"/> Try-in |
| <input checked="" type="checkbox"/> Temporary Restoration | <input checked="" type="checkbox"/> Record Model | <input checked="" type="checkbox"/> Gingiva | <input checked="" type="checkbox"/> Indirect Bonding Trays |
| <input checked="" type="checkbox"/> Aligner Model | <input checked="" type="checkbox"/> Denture | <input checked="" type="checkbox"/> Teeth Whitening Trays | |

ShapePanel Made Easy

ShapePanel is a free, easy-to-use, and comprehensive 3D printing software trusted by thousands of RAYSHAPE users. It automates most of the 3D printing file preparation process, significantly improving efficiency, and precision, and easing the workflow for dental practitioners.



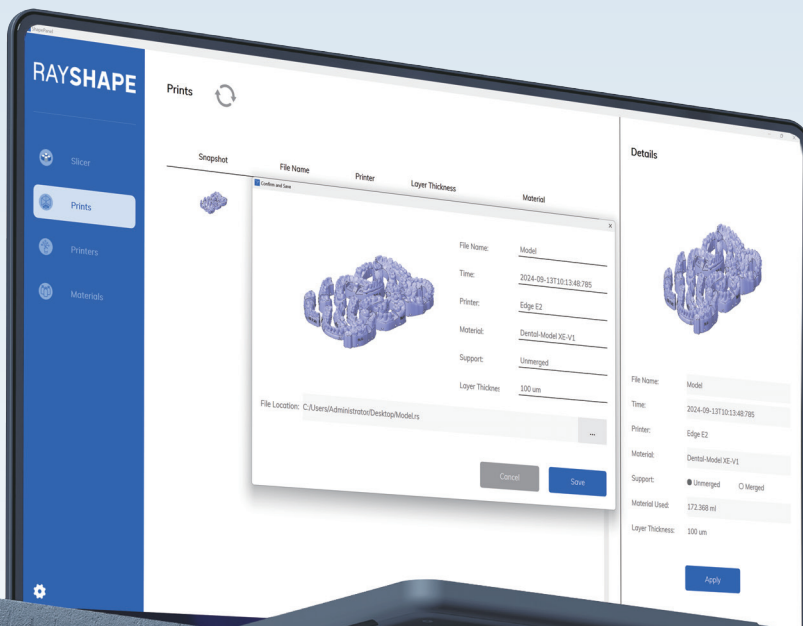
Free software



Free advanced editing functions



Open to 3rd party resin brands



User-friendly Design

The Edge E2 excels in user-friendly design, allowing quick resin tank changes in just one minute. It eliminates the need for calibration, making it accessible to beginners and ensuring a seamless plug-and-play experience.



No Calibration

Easy setup with no leveling needed, perfect for beginners.



Quick-Change Design

Swap resin tanks in 1 minute for efficient dental production.





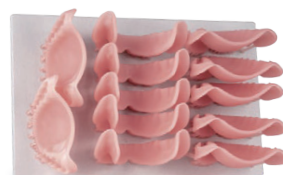
Surgical Guide
27 per print, 38 min



Implant Model
16 per print, 75 min



Temporary Crown
29 per print, 43 min



Denture Base
18 per print, 100 min

Technical Specifications

Build Volume	192×120×190 mm
Pixel Size	34.4 μm
Technology	LCD Technology
Dynamic Layer Thickness	0.05~0.1 mm
Printing Speed	Up to 85 mm / 1 hour (Depending on the resin type and slicer settings)

Materials

Available Materials	ShapeMaterials Dental Series
---------------------	------------------------------

Hardware

LCD Screen	9.25" 6K monochrome screen
Light Source	405nm LED
Resolution	5760 × 3600 pixels
Heating Module	Automatic heating build platform
Touch Screen	7" color touchscreen
Connectivity	USB2.0, Wireless network, Ethernet
Input	100~120VAC, 4A, 50/60Hz 200~240 VAC, 2A, 50/60Hz

Rated Power	350 W
-------------	-------

Software

Control System	Self-developed Master.OS
Slicing Software	ShapePanel
Operating System	Windows 7/8/10/11
File Format	(Import) .stl, .obj (Export) .rs, .shape

Advanced Functions	Support editing, automatic repair, model cutting, hollowing, perforating, labeling
--------------------	--



Network Printing	Deliver printing tasks to specified printer in LAN environment via "One Click" operation
------------------	--

Cluster Management	Manage the printing tasks of multiple devices in LAN environment
--------------------	--

Size & Weight

Device Dimensions	390 × 420 × 550 mm
Device Net Weight	31 kg
Package Dimensions	540 × 540 × 900 mm
Package Weight	45 kg

Contact Us

 www.rayshape3d.com
 sales.os@rayshape3d.com

Headquarters

Suzhou Laisai Intelligence Technology Co., Ltd.
 101, Building 6, Binjiang Science and Technology Innovation Center,
 No. 59, Jiangnan Avenue, Changshu Economic and Technological
 Development Zone, Jiangsu Province, China 215500

US Subsidiary

RAYSHAPE LLC
 6605 Longshore Street, Suite 240, Dublin OH 43017, USA

EU Subsidiary

RAYSHAPE B.V.
 William Boothlaan 258 Amstelveen The Netherlands